



2025



ANNUAL REPORT

EST. JUNE 2022
KEEPERS OF THE FLAME® FOUNDATION



TABLE OF CONTENTS

TOGETHER WE WEATHER THIS STORM

A LETTER FROM OUR FOUNDER.....1

MISSION.....2

HIGHLIGHTS.....3-4

PROGRAMS.....5-7

FINANCIALS.....8-9

PARTNERSHIPS.....10

OUR TEAM.....11

PHOTOS FROM 2025.....12

A LOOK AHEAD.....13

CONTACT US.....14

Photo Credits

John Alexander Photography
p. 2, 15 (Disco)



Letter from our Founder

Dear Keepers,

Wow! What an impactful year, and it's because of every one of YOU. We always say that together we weather this storm because the more we unite, the brighter that light shines for those traveling through the unthinkable – breast cancer. Together we make a difference. Every flicker of hope matters; every partnership, volunteer hour, donation, sponsorship, and mindful presence alongside those diagnosed helps to light up the darkness. From the bottom of our hearts, we thank you!

Keepers of the Flame® Foundation is founded and grounded right here in Savannah, supporting our local breast cancer community. We belong to you. We're here for YOU, your neighbors, mothers, daughters, sisters, and friends. We provide local patients with hardship support and free access to counseling. We are especially excited to have digitized our applications this year to break down barriers, empower patients further, and streamline the process.

So, take a peek at this year's annual report to see what's new, what we've accomplished, and how we plan to continue to grow and make a positive impact.

With Love,

Joyce Williams
Founder, ED, & Survivor





KEEPERS OF THE FLAME

MISSION

TO SHINE LIGHT INTO THE DARKNESS, EMPOWERING BREAST CANCER PATIENTS TO WEATHER BREAST CANCER BOTH PHYSICALLY AND EMOTIONALLY.

WHAT WE DO:

Our Programs Include:

- Mental Health Support: Financial Assistance to Psychotherapy
- Hardship & Transportation Assistance
- Reframe Beauty Photo Experience/Gallery
- Research
- Care Bags for Patients
- Educational Opportunities

2025 HIGHLIGHTS

SERVING OUR MISSION

THERAPY FINANCIAL ASSISTANCE

DIGITIZED APPLICATIONS & PROGRAM MANAGEMENT

TRANSPORTATION ASSISTANCE

DIGITIZED APPLICATIONS & PROGRAM MANAGEMENT

HARDSHIP ASSISTANCE

QUARTERLY DISTRIBUTION TO 4 LOCAL FACILITIES

EMPOWERMENT PHOTOGRAPHY SESSIONS

REFRAMING BEAUTY

GALLERY DISPLAY

REFRAMING BEAUTY

OPEN JOURNAL OF MEDICAL PSYCHOLOGY

RESEARCH PUBLICATION

CARE BAGS W/ ENCOURAGER

MASTECTOMY & CHEMO PATIENTS

DINNER - HOLIDAY GIFT CARDS

PATIENT SUPPORT

OUTREACH

SOUTH UNIV PA STUDENTS

PARTNER W/ CAPSTONE PROJECT

CITY COUNCIL

PORT WENTWORTH & SAVANNAH

SAVANNAH GHOST PIRATES

OUTREACH, EDUCATION, & FUNDRAISE

FUNDRAISERS

BOOTLEGGER EVENT

SPRING FUNDRAISER

TENNIS TOURNAMENT

SPRING FUNDRAISER

MALL WALK

FALL FUNDRAISER

DISCO NIGHT

FALL FUNDRAISER

GRANTS

BROTHER'S BROTHER FOUNDATION

THERAPY GRANT

UWCE WOMEN'S UNITED

TRANSPORTATION MINI GRANT





SAVANNAH EMPOWERED

Margie's Army donated their organization's funds to Keepers of the Flame® Foundation to continue the work of supporting local breast cancer patients and survivors in Southeast Georgia! Now that they've accomplished the goal that they set out to do, They're encouraging all of their followers to support savannah's breast cancer community through keepers of the Flame®.

BACKGROUND:

Margie Singleton, founder of Margie's Army Foundation, and Joyce Williams, founder of Keepers of the Flame Foundation, are both survivors from Savannah, GA who are passionate about empowering the breast cancer community.

Margie discovered a lump after her screening, had an MRI, and learned she had both cancer and dense tissue, something that can make finding cancer more difficult. After her experience, Margie set out to do something about it - to take her experience and empower others by changing Georgia Law. Margie's Army Foundation was founded to advocate for legislation that would require notification of dense breast tissue during mammography, which is often a challenge in diagnosing cancer; and she did it!! Margie's Law, now in effect, empowers all of Georgian women with this critical information.

Joyce founded KotF after experiencing both the physical and psychological challenges of being a breast cancer patient. Keepers of the Flame® now provides both hardship funds and mental health therapy for women in need.

Savannah is blessed to benefit in so many ways from the work Margie has done! Not only are our local women empowered with the new legislation notifying them of breast density, but now, with the donation of their funds to Keepers of the Flame®, our hardship and therapy programs will be able to grow, thus empowering local women even further.

A note about Breast Density:

Dense tissue makes it harder to detect cancer through mammography, and it is also a risk factor for breast cancer. You cannot discern whether or not you have dense tissue from physical touch or size, only through screenings. Once you are notified on your mammography report about what your breast density is (now a requirement thanks to Margie's law), you can discuss additional screening options to improve detection for you with your provider. Information is empowering!

THERAPY

PROVIDING BREAST CANCER PATIENTS WITH ACCESS TO FREE MENTAL HEALTH SUPPORT SERVICES

Our program provides local breast cancer patients with free access to Psychotherapy. Through a grant provided by Brother's Brother Foundation, this program offers patients with 5 initial sessions to be used within a 3-month period. If patients complete the program, they may reapply for a second set. Patients can receive up to 3 sets in a calendar year. If patients do not complete the program, funds will get reallocated to maximize reach, however, patients can reapply at a time more convenient for them. This year, our applications have become digital, taking no more than one minute to complete. Patients can often be enrolled within 24-48 hours.

Enroll Today!



107

**60 sessions Paid in 2025 &
47 additional sessions allocated
for scheduled appointments**

REFRAMING BEAUTY

EMPOWERMENT PHOTOGRAPHY GALLERY

In 2025 we added two new Empowerment Photos to our Reframing Beauty Gallery: *Just Breathe*, Ginger; and *Rise Above*, Wanda. The complete gallery was on display throughout the month of October. We also scheduled a third session to take place in 2026. Analysis of our IRB Research study on how participation influences the psychological well-being of breast cancer patients concluded, and our study was published in October in *Open Journal of Medical Psychology*.



Just Breathe

MEMBERS OF THE FLAME FOUNDATION'S
Reframing Beauty Program

Breast cancer taught Ginger that she didn't have to be strong and put on a brave face all the time. It was ok for her to experience all of the emotions and allow others to care for her. Her primary source of strength was her faith in God, and with Him in control, she could slow down and just breathe.



Rise Above

MEMBERS OF THE FLAME FOUNDATION'S
Reframing Beauty Program

When Wanda was diagnosed with breast cancer, she decided that nothing was going to keep her down. She focused on leaning into her inner strength. "When the going gets tough, the tough get going" was her motto.

HARDSHIP

SUPPORTING LOCAL BREAST CANCER PATIENTS

KotF collaborates with social workers at local hospitals to provide patients in need with assistance with hardships such as phone activation, child-care, transportation, groceries, etc. In 2025, we've grown this program by 28%, and we expanded to include patients at ACI, SJCH, Effingham Hospital, and Low Country Cancer Care.

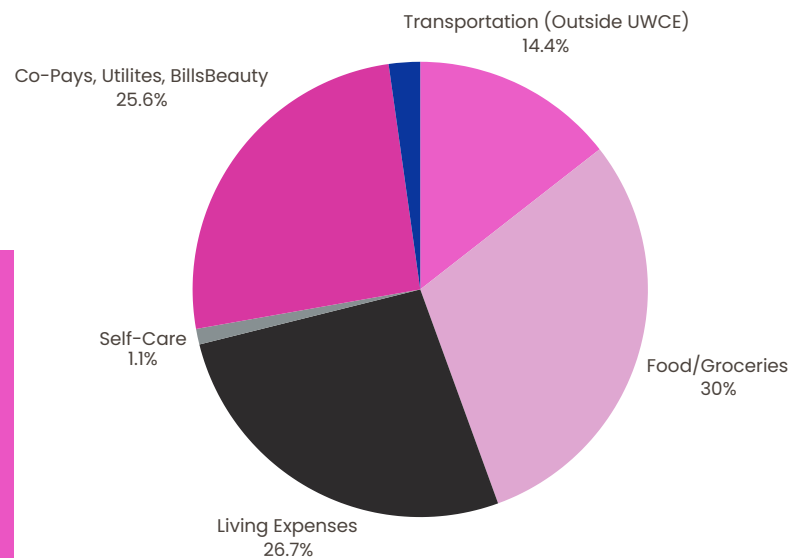
28%
INCREASE



\$11,500

**Hardship Funds
Distributed this Year**

Hardship Distribution
Recipient support for each category



TRANSPORTATION

GRANT PROVIDED BY UWCE WOMEN'S UNITED TRANSPORTATION FUND

This fund helps us break down barriers by providing transportation assistance to our local breast cancer patients whose annual household income is below the 80% regional median. It's through this grant where we're able to provide gas cards so that patients can get to their life-saving treatments. In 2025, we transferred to a digital application and have provided 33% more assistance than 2024.

\$2,000

**Transportation Assistance
Provided This Year**

33%
INCREASE



RESEARCH

PEER-REVIEWED JOURNAL PUBLICATIONS

In 2025, we published another research article in partnership with Dr. Elisabeth Counselman-Carpenter and Adelphi University. It examined how participation in Empowerment Photography impacts the psychological well-being of breast cancer patients. We also completed the analysis of a program evaluation study on Financial Assistance to Mental Health Support opportunities and are scheduled to submit for publication December 2025.

PUBLICATION:

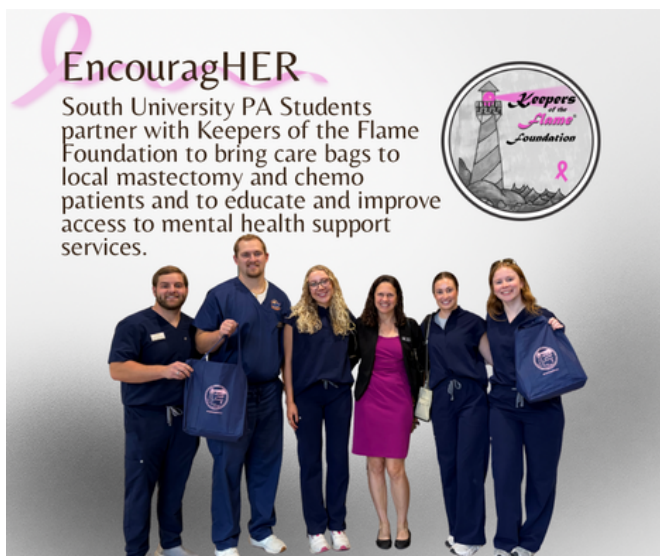
Open Journal of Medical Psychology (OJMP) Vol 14 No. 4 2025

Title: *Enhancing Self-Worth and Patient Well-Being: The Influence of Participation in Empowerment Photography on the Psychological Well-Being of Breast Cancer Patients*

CARE BAGS

PROVIDING MASTECTOMY, CHEMO, AND PATIENT/SURVIVOR SUPPORTING CARE TO OUR LOCAL BREAST CANCER COMMUNITY

In 2025, we partnered with South University PA Students and their capstone project. Through the efforts of their EncouragHER project, we were able to distribute 60 care bags. Additionally, with the support of donors, we provided 82 wigs to a local oncology center; and thanks to Texas Roadhouse, we were also able to provide over \$1200 in Holiday dinner gift cards for our local patients.



60

CARE BAGS

82

WIGS

\$1200+

DINNER GIFT CARDS



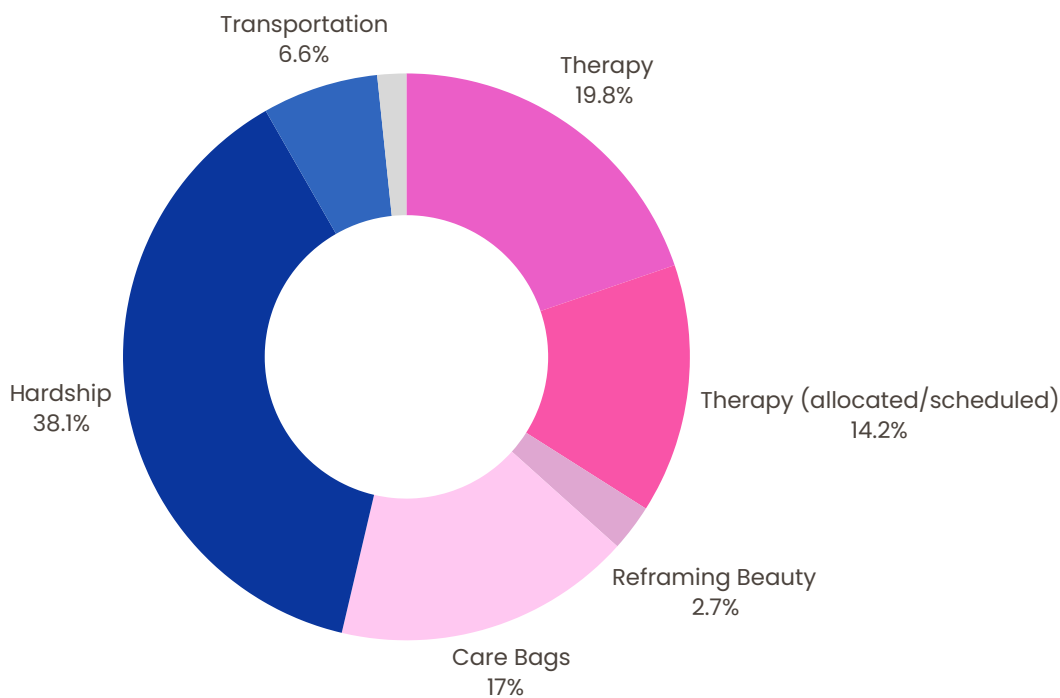
FINANCIALS

REVENUE	AMOUNT
SHINE THE LIGHT DISCO NIGHT FUNDRAISING & COMMUNITY EVENT	\$41,402
MALL WALK FREE FUNDRAISING& EVENT	\$2,524
BOOTLEGGGER/CASINO NIGHT FUNDRAISING & COMMUNITY EVENT	\$23,993
TENNIS SPRING FUNDRAISING EVENT	\$10,846
BROTHERS BROTHER FOUNDATION GRANT FOR THERAPY PROGRAM	\$10,000
THIRD PARTY FUNDRAISING FROM COMMUNITY	\$7,089

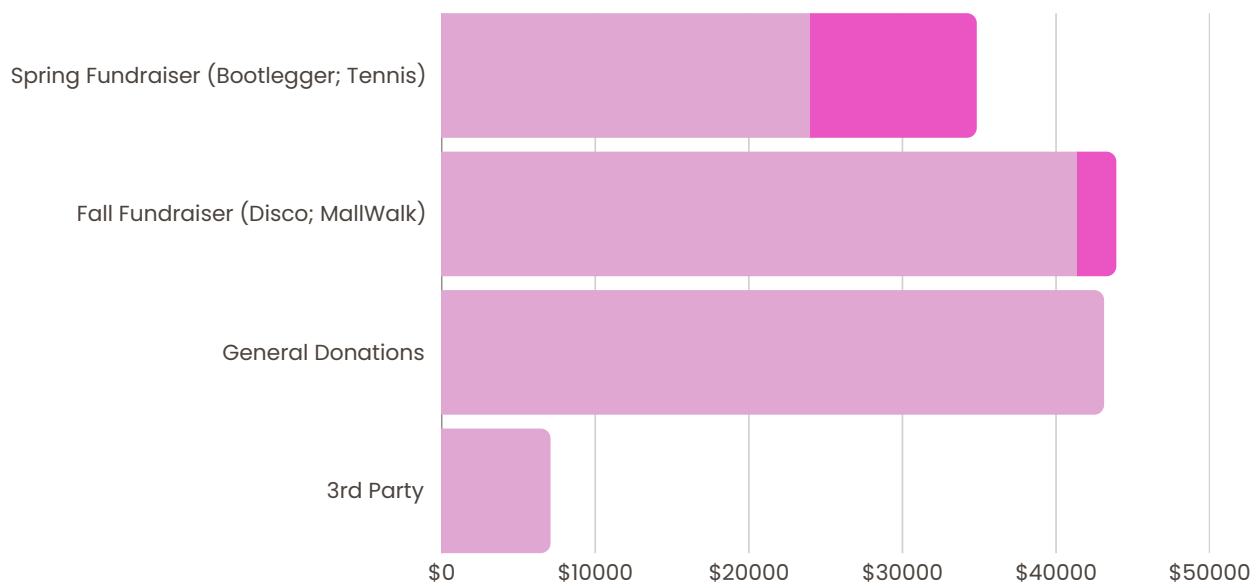
FINANCIALS

FUNDS FURTHERING MISSION

Mission: To shine light into the darkness, empowering breast cancer patients to weather breast cancer both **physically** and **emotionally**.



NET FUNDRAISING





PARTNERSHIPS

Memorial Health
Saint Joseph's Candler
Effingham Health
Summit Cancer Care
Low Country Cancer Care

partner with us to connect patients to our hardship, transportation, and therapy resources.

Atlantic Radiology
Center for Women's Health in Pooler
 partner with us to connect patients to our therapy program.

Brookfield Women and Oglethorpe Mall Partners with us to bring our Mall Walk to Savannah.

Brothers Brother Foundation Global Relief Provides grant to fund our Therapy Program.

2025 Third Party Fundraisers: Savannah Ghost Pirates; Savannah Toyota; Texas Roadhouse; Paint the Town Pink; Port Wentworth Police & Fire Department; Larry's Giant Subs; Scissor Land Salon; Riverstreet Sweets Tanger Outlets; Memorial Day School National Honor Society; Anatolia Tile & Stone; Ziggis.

Dr Elisabeth Counselman-Carpenter & Adelphi University partner with us to do integral research, program evaluations, and publications.

Savannah Country Club & Brianna Welch

host our annual Shine the Light Disco Night and our Bootlegger/ Casino night

United Way of the Coastal Empire

Women United Transportation Fund partners with us to bring qualifying breast cancer patients transportation assistance so that they may get to their life-saving treatments.

WTOC, & Live Like Locals

Share our programs, outreach, and stories with the community

South University PA Students

partnered with us to create care bags and promote awareness for mental health support

After Breast Cancer Diagnosis (ABCD)

partners with us to bring one-to-one peer mentoring to Savannah.

OUR TEAM

THE AWESOME TEAM BEHIND THIS ORGANIZATION

BOARD OF DIRECTORS:



ASHLEY MOORE
DIRECTOR/ PRESIDENT
THERAPIST



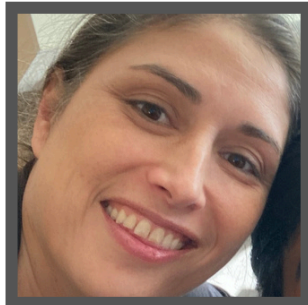
AILEEN GABBEY
DIRECTOR/VP
PRODUCTIVE NONPROFITS



LAURA DOW
DIRECTOR/TREASURER
RET CFO MEMORIAL



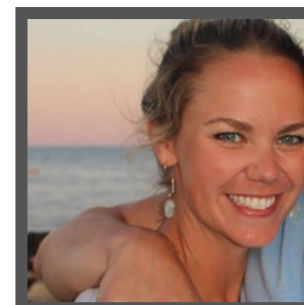
JEN DAVIS
DIRECTOR/ SECRETARY
WOMEN'S HEALTH NP



VANESSA BRINK
DIRECTOR
NP MEDICAL ONCOLOGY



JENNY WOODWARD
DIRECTOR
SURVIVOR



PATTI BRYAN
DIRECTOR
ADVOCATE/FUNDRAISING



VALERIE OLIVER
DIRECTOR
ADVOCATE/FINANCE

EXECUTIVE DIRECTOR:



JOYCE WILLIAMS
FOUNDER/
EXECUTIVE DIRECTOR/
SURVIVOR

PICTURES FROM 2025

A LOOK BACK



FUTURE OUTLOOK

PROGRAM GROWTH

- **Therapy** - increase amount of funds spent on this program in 2026; educate community on opportunity; partner with more therapist offices; extend pilot arm for children and spouses.
- **Transportation Assistance**
- **Hardship Support** - increase the amount of quarterly allotments to hospital social workers' patients in order to maximize impact; seek grant funders for this program; conduct a community needs assessment for "Greater Aide" under Hardship.
- **Reframe Beauty** - add to our current galleries and have on display in the fall
- **Care Bags** - continue this outreach for chemo patients utilizing community partnerships..
- **Peer-Counseling** - continue referring to ABCD, having staff be both ABCD and local mentors
- **Research** - Finalize and submit for publication on a Program Evaluation of Financial Assistance to Mental Health Support opportunities..



CONTACT US

BECAUSE TOGETHER WE WEATHER THIS STORM



KEEPERS OF THE FLAME FOUNDATION



Website

www.togetherweweather.org



Email

joyce@togetherweweather.org

Donate Now



SCAN ME

Patients,
Enroll in Therapy Today



Counselors,
Join our Program &
Become a Partner